



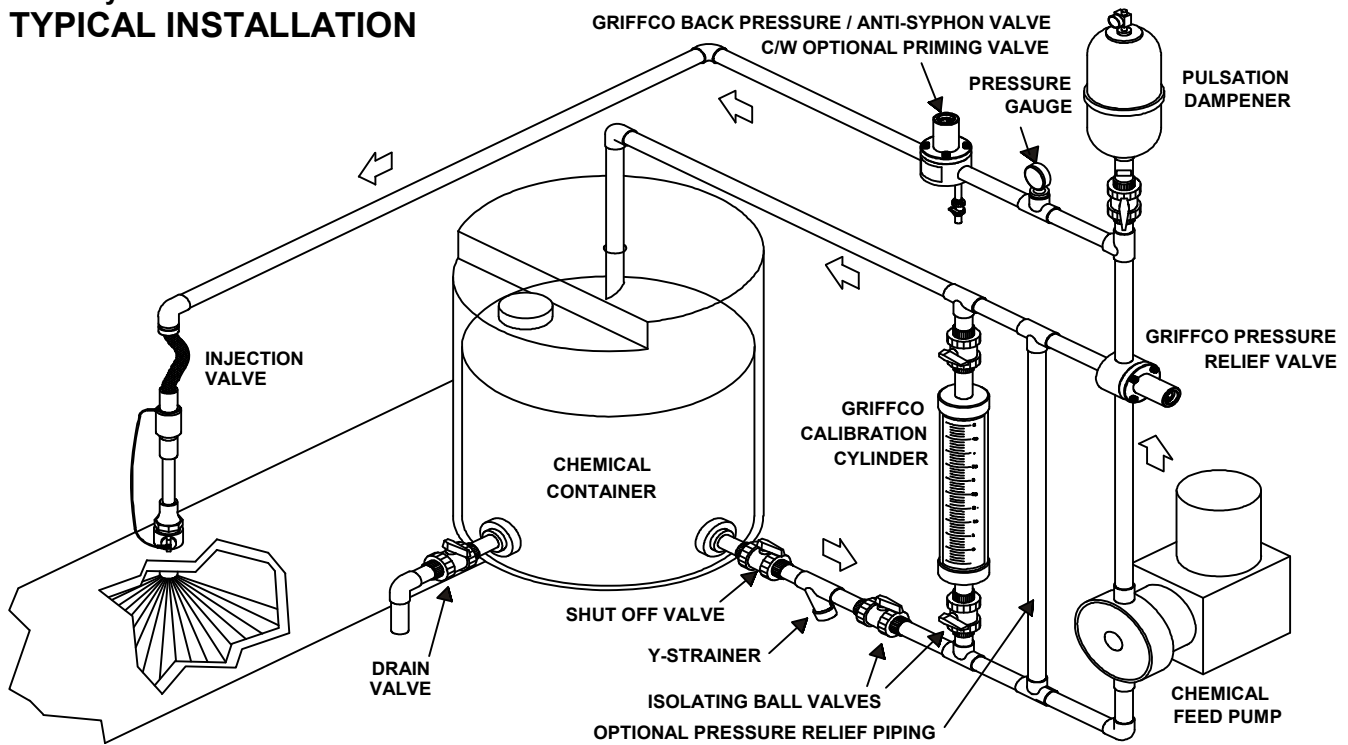
Griffco Valve Inc.
 6010 N. Bailey Ave., Ste 1B
 Amherst, NY 14226
 Phone: 1 716 835-0891
 Fax: 1 716 835-0893

G - SERIES PRESSURE RELIEF VALVE



Griffco G-Series diaphragm pressure relief valves are designed to protect chemical feed systems from over pressure damage caused by defective equipment or a blockage in the chemical feed line. Robust construction ensures reliability in the rigorous service of municipal and industrial applications. Wetted materials include: **PVC, CPVC, PP, PVDF, PTFE, 316 SS, A20 and Hastalloy C.** Available sizes: 1/2" - 4".

TYPICAL INSTALLATION



Features:

- High Reliability / Low Cost
- Vulcanised PTFE/EPDM Diaphragm
- Adjustable 0 - 250 PSI
- Optional 350 PSI Rated Valve
- 2 & 3 Port Configurations
- Ventable to Suction Line
- Robust, Machined Construction
- Wide Range of Materials

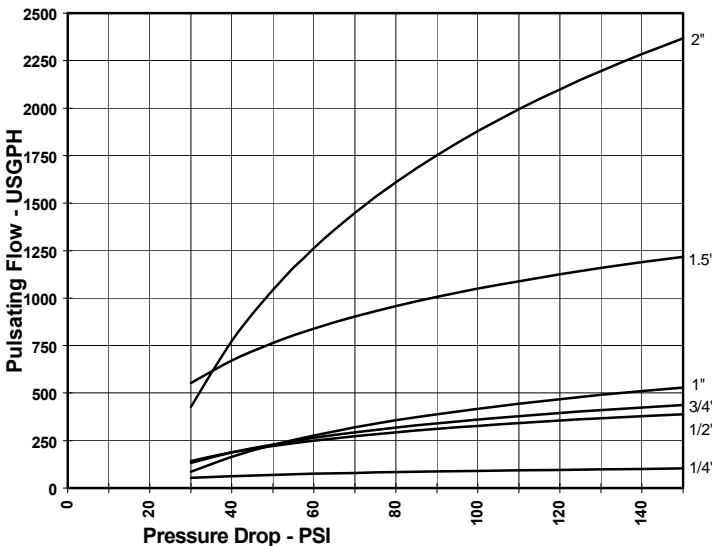
Operation:

Griffco diaphragm pressure relief valves operate when the pressure in the chemical system exceeds the preset pressure of the valve. The diaphragm is held against the valve seat by an internal spring. When the preset pressure is exceeded the diaphragm is forced up and the chemical flows out the relief port, back to the chemical tank or to the suction side of the pump. The valves are pre-set at 50 psi, however they are field adjustable from 0 - 250 psi, (optional 350 psi) via the adjustment screw. The relief valve should be set approximately 15 psi higher than the system pressure. Installation should be made as close to the pump as possible, without any valves or accessories between the relief valve and the pump. Consult your pump manufacturer for his recommendations.

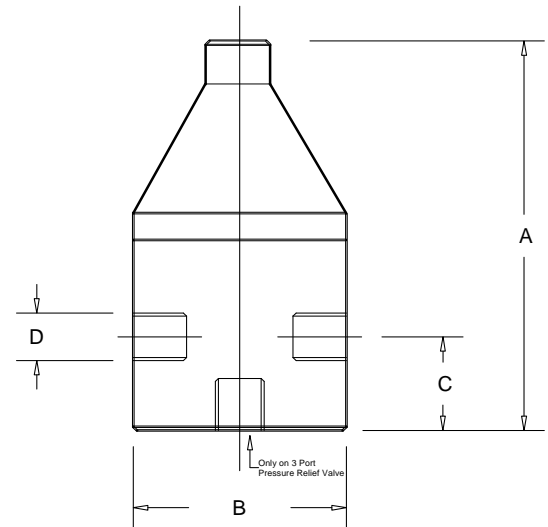
Technical Data:

Model PRG Sizes:		1/2", 3/4", 1", 1 1/2", 2", 3", 4"			
Connections:		NPT, Socket, Union, & Flange			
Pressure Adjustment		0 - 50 psi, 0 - 150 psi, 0 - 250 psi, 50 - 350 psi			
Flow Rates @ 150 psi		Shipping Weight: lbs			
Size	Pulsating	Continuous	Plastic	Metal / Plastic Top	Metal / Metal Top
1/2"	300 USgph	21 USgpm	3.0	5.5	6.5
3/4"	300 USgph	21 USgpm	3.0	5.5	7.0
1"	500 USgph	26 USgpm	3.5	6.0	7.0
1 1/2"	1200 USgph	63 USgpm	7.0	14.0	23.0
2"	2350 USgph	120 USgpm	9.0	20.0	30.0
3"	5200 USgph	270 USgpm	28.0		
4"	5200 USgph	270 USgpm	30.0		
Max Temperature: (°F)		PVC: 140° ; CPVC & PP: 195°; PTFE, PVDF, & Metal: 300°, (Peak 390°)			
Materials of Construction:					
Diaphragm		PTFE / EPDM, Optional: Viton & PTFE / Viton			
Valve Top		Standard: Noryl (1/2" - 2") PVC (3" & 4") Optional: 316 SS			
Valve Body		PVC, CPVC, PP, PTFE, PVDF, 316 SS, A 20, Hast. C, Others on Request			

Performance Curves: (3" & 4" curves on request)



Dimensions: (inches)



Product Codes For Ordering Pressure Relief Valves:

PRG □ □ □ □ □

 1 2 3

1 = Size

050 - 1/2"
075 - 3/4"
100 - 1"
150 - 1 1/2"
200 - 2"
300 - 3"
400 - 4"

2 = Material

P - PVC
CP - CPVC
PP - Polypro
T - PTFE
K - PVDF
S - 316 SS
A - Alloy 20
C - Hastalloy C

3 = Options

V - Viton Diaphragm
S - Socket Connections
F - Flanged Connections
U - Union Connections
B - BSP Thread Connections
OSS - Optional 316 SS Top
MSS - 50 - 350 psi; 316 SS Top
AR - Optional Air Release Port

D	A	B	C
1/2"	5.60	3.50	1.10
3/4"	5.60	3.50	1.10
1"	5.90	3.50	1.25
1 1/2"	8.95	4.50	2.10
2"	8.95	5.00	2.10
3"	12.0	15.0	3
4"	12.0	15.0	3